

# The Diving Competition

## Reading

Name: \_\_\_\_\_

Look and read. Put a tick (✓) or a cross (X) in the box.

There are two examples.

Examples



Sammy is very tall.



Olive is not short.



## Questions

1



Sammy is very strong.



2



Olive is very flexible.

☐

3



Tim can jump very high.

☐

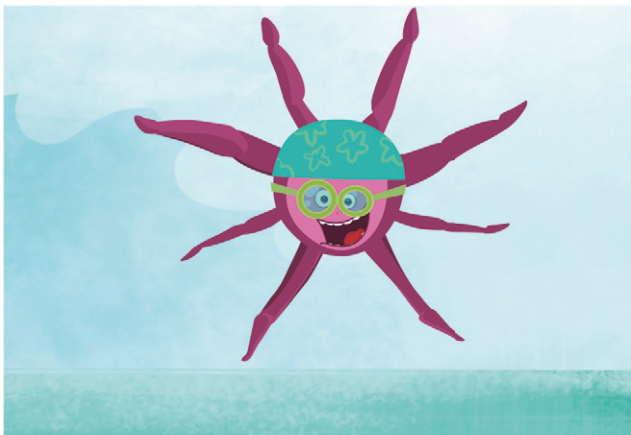
4



Tim doesn't spin very fast.

☐

5



Olive is so slow.

☐

# The Diving Competition

## Writing

Name: \_\_\_\_\_

Look at the pictures and read the questions. Write one-word answers.  
There are two examples.



### Examples

What is the competition?

diving

How many divers are there?

three

### Questions

1. Who is tall and strong?

\_\_\_\_\_





2. Who jumps high but goes in slow? \_\_\_\_\_

3. Who doesn't jump high? \_\_\_\_\_



4. What place does Tim win? \_\_\_\_\_

5. What place does Sammy win? \_\_\_\_\_



# The Diving Competition

## Speaking

Look at the picture. Answer your teacher's questions.

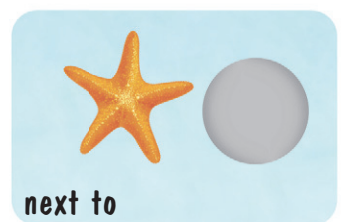
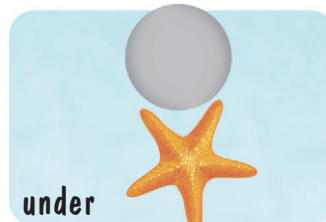
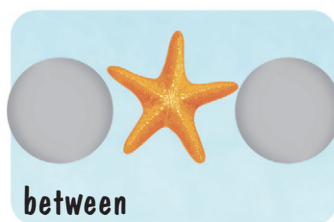


# The Diving Competition

Listening 

Name: \_\_\_\_\_

Listen and draw lines. There is one example.





# The Diving Competition

## Teacher's Guide

### Listening Answer Key

1. [LINE FROM THE STARFISH TO THE SPACE BETWEEN SAMMY AND OLIVE]
2. [LINE FROM THE CRAB TO UNDER TIM'S ROCK]
3. [LINE FROM THE CLOWNFISH TO THE SPACE BETWEEN TIM AND SAMMY]
4. [LINE FROM THE CLAM TO THE SPACE NEXT TO OLIVE, TO THE RIGHT]
5. [LINE FROM THE CORAL TO SAMMY'S ROCK]

### Audio Script

NARRATOR: Listen and draw lines. There is one example.

WOMAN: Put the seahorse on Sammy.

MAN: Sorry? Put the seahorse where?

WOMAN: On Sammy.

MAN: Right. I put the seahorse on Sammy.

NARRATOR: Can you see the line? This is an example.  
Now you listen and draw lines.

NARRATOR: One.

WOMAN: Put the starfish between Sammy and Olive.

MAN: Pardon? Where do I put the starfish?

WOMAN: Between Sammy and Olive.

MAN: Okay. I put the starfish between Sammy and Olive.

NARRATOR: Two.

WOMAN: And now put the crab under Tim's rock.

MAN: Sorry, put the crab where?

WOMAN: Under Tim's rock.

MAN: Okay. I put the crab under Tim's rock.

NARRATOR: Three.

WOMAN: And now put the clownfish between Tim and Sammy.

MAN: The clownfish?

WOMAN: Yes, the clownfish. Put it between Tim and Sammy.

MAN: Right. I put the clownfish between Tim and Sammy.

NARRATOR: Four.

WOMAN: And now put the clam next to Olive, to the right.

MAN: Put the clam where?

WOMAN: Next to Olive, to the right.

MAN: Okay. I put the clam next to Olive, to the right.

NARRATOR: Five.

WOMAN: Put the coral on Sammy's rock.

MAN: Sorry? Where do I put the coral?

WOMAN: On Sammy's rock.

MAN: Right. I put the coral on Sammy's rock.

### Reading Answer Key

1. ✓
2. ✓
3. ✗
4. ✗
5. ✗

### Writing Answer Key

1. Sammy
2. Sammy
3. Tim
4. second
5. third

# The Diving Competition Teacher's Guide

## Speaking Procedure

1. Greet the student. Invite him/her to sit down. Have a brief conversation as a warm-up.

### Example dialogue

T: Hello. My name's \_\_\_\_\_. What's your name?

S: (My name's) \_\_\_\_\_.

T: How old are you?

S: (I'm) \_\_\_\_\_ (years old).

T: And where are you from?

S: (I'm) from \_\_\_\_\_.

2. Show the picture to the student. Point to parts of it and ask general information questions (e.g., *Who is this? What color is his/her/its hair? What is he/she/it wearing? What musical instrument is this one? How many toys are there? What is the name of the band? Who is singing?*).

### Example dialogue

T: How many toys are there?

S: (There are) three.

T [POINTS TO LUCY]: Who is this?

S: (It's) Lucy.

3. Use the topic of the image to ask personalized questions (e.g., *Do you like listening to music? What's your favorite kind of music? Can you play any musical instrument? Do you have a musical instrument at home?*). Expect one- or two-word answers.

## Speaking Score Guide

Score 1 point for understanding and answering general information questions.

Score 1 point for understanding and answering personalized questions.

### Very good (+)

Can answer at least 5 general information questions and 3 personalized questions.

### Satisfactory (✓)

Can answer at least 4 general information questions and 2 personalized questions.

### Needs additional support (-)

Cannot answer more than 3 general information questions and cannot answer more than 1 personalized question.